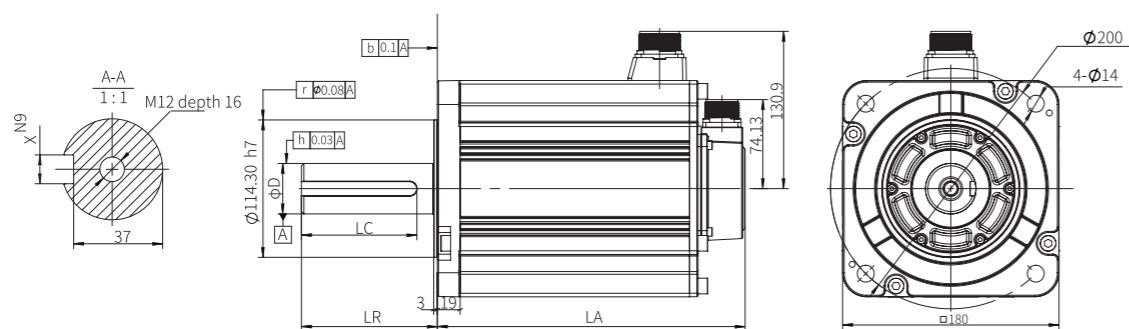


## Motor model list

Power (kw)	Motor model	Adapted driver	Voltage level (AC)	Inertia type	Rotor inertia [10 <sup>-7</sup> kg.m <sup>2</sup> ]	Encoder bit	Rated speed [RPM]	Max speed [RPM]	Rated torque [Nm]	Max torque [Nm]
3.0	MS6G-180CN15B2-43P0	DS5L2/C2/K2-43P0-PTA	380V	Medium inertia	45790	19	1500	4500	19.1	47.75
	MS6G-180CN15BZ2-43P0				47340	19	1500	4500	19.1	47.75
	MS6G-180TH15B2-43P0				45790	23	1500	4500	19.1	47.75
	MS6G-180TH15BZ2-43P0				47340	23	1500	4500	19.1	47.75
4.4	MS6G-180CN15B2-44P4	DS5C2/K2-45P5-PTA	380V	Medium inertia	67600	19	1500	4500	28	84
	MS6G-180CN15BZ2-44P4				76770	19	1500	4500	28	84
	MS6G-180TH15B2-44P4				67600	23	1500	4500	28	84
	MS6G-180TH15BZ2-44P4				76770	23	1500	4500	28	84
5.5	MS6G-180CN15B2-45P5	DS5C2/K2-45P5-PTA	380V	Medium inertia	91360	19	1500	4500	35	87.5
	MS6G-180CN15BZ2-45P5				100530	19	1500	4500	35	87.5
	MS6G-180TH15B2-45P5				91360	23	1500	4500	35	87.5
	MS6G-180TH15BZ2-45P5				100530	23	1500	4500	35	87.5
7.5	MS6G-180CN15B2-47P5	DS5C2/K2-47P5-PTA	380V	Medium inertia	135330	19	1500	4500	48	120
	MS6G-180CN15BZ2-47P5				144500	19	1500	4500	48	120
	MS6G-180TH15B2-47P5				135330	23	1500	4500	48	120
	MS6G-180TH15BZ2-47P5				144500	23	1500	4500	48	120

## Motor dimension

(Unit:mm)



Motor model	LA±1		Shaft length LR	Key length LC	Shaft hole depth	φD	Key width X	Inertia level
	Normal	With brake						
MS6G-180CN15B□2-43P0	162	206.5	79	66	16	35	10	Medium inertia
MS6G-180CN15B□2-44P4	185	229.5	79	66	16	35	10	
MS6G-180CN15B□2-45P5	208	252.5	113	96	16	42	12	
MS6G-180CN15B□2-47P5	256	300.5	113	96	16	42	12	
MS6G-180TH15B□2-43P0	176.5	221	79	66	16	35	10	
MS6G-180TH15B□2-44P4	199.5	244	79	66	16	35	10	
MS6G-180TH15B□2-45P5	222.5	267	113	96	16	42	12	
MS6G-180TH15B□2-47P5	270.5	315	113	96	16	42	12	



Compatible with DS5L2 \ DS5C2 servo drives (3-7.5kW)

## MS6G-180 series medium inertia servo motor

Short body | High reliability | More precise positioning



XINJE WeChat

XINJE

WUXI XINJE ELECTRIC CO.,LTD.

Address: No.816,Jianzhu West Road,Binhu District,Wuxi City,Jiangsu Province,China

TEL: 86-0510-85134136

Fax: 86-0510-85111290

Website: www.xinje.com

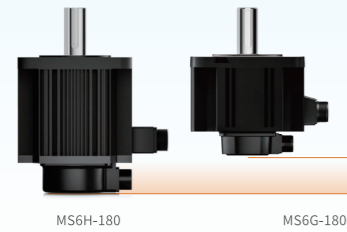
Email: sales@xinje.com

Technical Service Hotline  
**400-885-0136**

Automation Trusted Partner

# 01 Lightweight design, shorter body

\*Note: Taking 3kW as an example

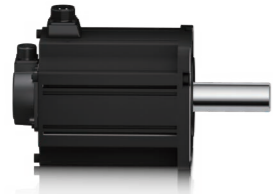


The body length of the 3kw non brake motor is only **162mm**  
The body length of the 4.4kw non brake motor is only **185mm**

**25%**

- Compared with the MS6H series servo motor, the MS6G series has a reduced body length of about 25%, making it more suitable for compact equipment scenarios.
- The black body and frosted texture effectively reduce the tactile temperature on the surface of the motor body.

# 02 High precision encoder for more accurate positioning



Adapt to multiple encoders **19-bit/23-bit**

- 19-bit and 23-bit absolute value encoders can be selected for higher positioning accuracy.

# 03 High protection level, fearless of harsh environments



- The protection level of the MS6H-180 series B2 motor is IP65, and the MS6G-180 series has optimized the motor structure, increasing the protection level to IP67, dustproof and waterproof, and is not afraid of harsh environments.

## Applicable occasions



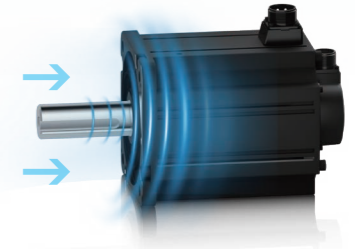
# 04 Easy to choose the model and flexible configuration

- The MS6G-180 series motor comes standard with a single/multi turn integrated encoder. When switching between single turn and multi turn, only the encoder cable (battery box) needs to be replaced.

# 05 Improved vibration resistance and more reliable operation

Improved integration of end cover and motor body, fixed structure of aviation plug filled with adhesive

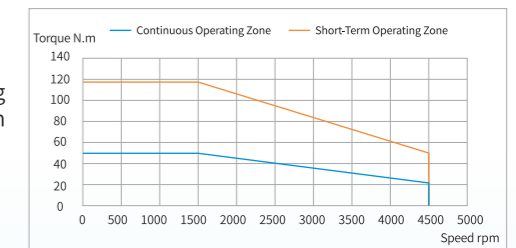
Improve the overall performance of the motor  
Strength and anti-vibration capability



- In order to enhance the overall strength and anti-vibration ability of the motor, an integrated design of the end cover and body is adopted, while improving the fixed structure of the aviation plug and measures such as glue filling, which can make the equipment operate more reliably.

# 06 Super Overspeed Capability

- The motor has an ultra-high field weakening speed capability, increasing the maximum operating speed to 4500rpm.



\*Note: Taking MS6G-180CN15B2-47P5 as an example.

## Naming rule

**MS6G - 180 C N 15 B Z 2 - 4 3P0**

① Inertia type		② Flange		③ Encoder construction		④ Encoder specifications		⑩ Motor power	
Name	Inertia	Name	Flange	Name	Type	Name	Specification	Name	Rated power (kW)
MS6G	Medium inertia	180	180 flange	C	Magnetic encoder	N	Single/multi turn integrated 19-bit	3P0	3
				T	Optical encoder	H	Multi turn 23-bit	4P4	4.4
								5P5	5.5
								7P5	7.5

⑤ Rated speed		⑥ Shaft specification		⑧ Motor connector		⑨ Power supply voltage	
Name	Rated speed (rpm)	Name	Shaft specification	Name	Connector type	Name	Voltage
15	1500	A	With key, without oil-proof, with tapped hole	2	Aviation connector	4	380V level
		B	With key, with oil-proof, with tapped hole				
		C	Without key, without oil-proof, with tapped hole				
		D	Without key, with oil-proof, with tapped hole				

⑦ Power-off brake	
Name	Power-off brake
Z	With brake
Vacant	Without brake